

Energy Saver

Smart Office Light



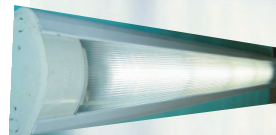
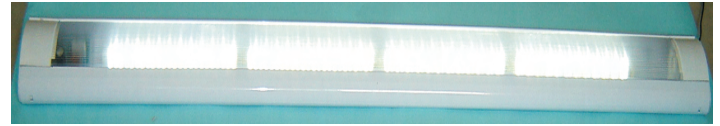
SOL Series

A revolutionary design in recessed lighting, bringing the newest technology for maximized benefit.

- Minimize energy consumption with maximum light output
- Longest life compared to any other available light source

SOL series of true energy saving lighting fixtures are real value for money. These lights offer excellent light output per watt and at the same time have amazingly long life

Spend only once and start enjoying the benefits of newest technology in lighting.



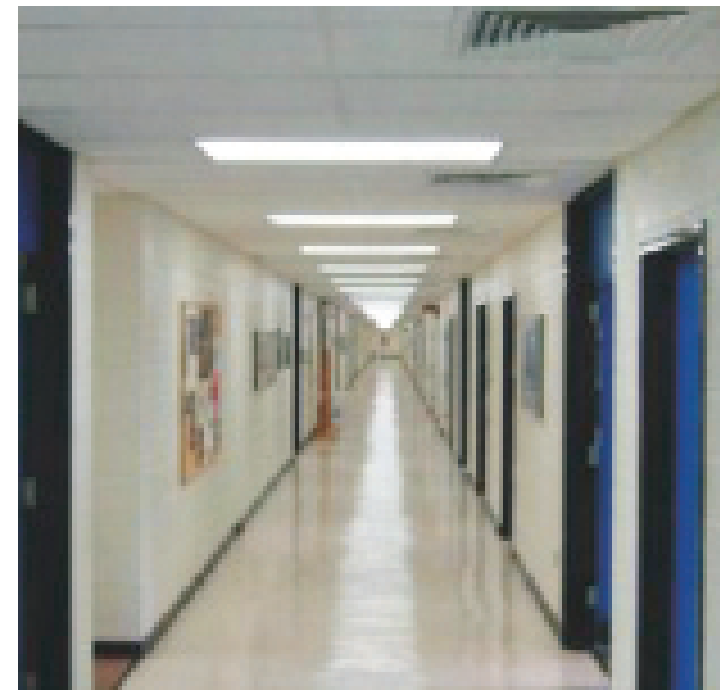
SMART LIGHTS

Proudly presents fully covered Slim & Smart Light. Its super dynamic shape gives smart look in interior. Lined pattern diffuser gives the glorious touch, you deserve.



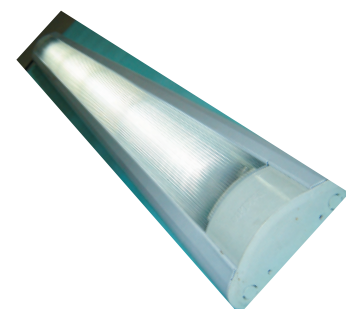
Features

- Solid state light, no electrodes or filaments.
- Longest life among available lighting technologies.
- Highest efficiency (light output / watt).
- Cool light, does not generate heat.
- Does not get dim like other lamps.
- No choke, No starter, No flicker
- True energy saving - High Power Factor.
- No harmful emissions.
- No mercury, No lead.
- Better uniformity.
- Wide beam angle.
- Cool White or Warm White
- Easy installation (pole or bracket)
- No maintenance required.
- Slim and flexible design weather proof design



Applications

Office / Room lighting, Corridors, Covered Walkways, Warehouses, Stores and many more places where uniform distributed lighting is required



Technical Data

Mains Voltage / Frequency	170 ~265 VAC, 50 / 60 Hz
Power Rating	20 /40 Watts
Power Factor	> 0.95
Luminous Flux	1800 / 3600 Lumen
Efficacy	90 Lumen / Watt
Color Temperature	Cool, Pure & Warm White
Beam Angle	> 120°
Light Source	Surface Mount LED

Life Span	>50,000 Hours / 15 Years*
Operating Temperature	-10° ~ +55° C
Operating Humidity	0 - 95% Non-Condensing
Dimensions	730/1340x115/170x50 mm
Weight	1.2 Kg
Ingress Protection	IP-67
Warranty	12 Months
Mounting	Paklite Cabinet with Std. Roof/Wall Mounts

* Lamp life (by design), Based on 8 Hours / Day usage

Energy Saving Comparison

Factors	Tube Lights	
	SOL-4 (40W)	40W Tube Light
Lamp Power Consumption	40 W	2 x 40 W
Real Power Consumption (including power supply)	42 W	190 W ⁽¹⁾
Life Span (Hours)	50,000	5,000
Comparison of Energy Consumption (For 10 lights)	Based on 10 Light Fixtures	
Total Power Consumption (Watts)	420	1800
Electricity Consumption / Day (KW-Hour) ⁽²⁾	5.05	1921.6
Annual Electricity Consumption (KW-Hour)	1,840	7,884
Cost of Energy & Maintenance (For 10 fixtures)	Based on Rs. 12 / Unit of Electricity	
Cost of Energy consumption / Year (Rupees)	22,080	96,608
Cost of Lamp Replacement ⁽³⁾	N/A	1,000
Cost of Labour	N/A	1,000
Cost of Choke Replacement	N/A	1,500

Based on this data, each SOL-4 product saves you at least Rs.6,210/- per year

For further information, please contact

- (1) Local made chokes consume too much power
- (2) Based on 10 hours operation / day
- (3) Electrode failure is a common problem in sodium lamp

Micropak (pvt) Ltd.

218, St. 7, I-9 Industrial Area
Islamabad, 44000, Pakistan
+92-51-4432159, 4432079
<http://www.micropak.com.pk>

Aesirah

Aesirah (SMC) Pvt. Ltd
I/H-100, St 16, Falcon Complex
Rawalpindi, 54000 Pakistan
+92-51-4475651, 4474434
<http://www.aesirah.com>